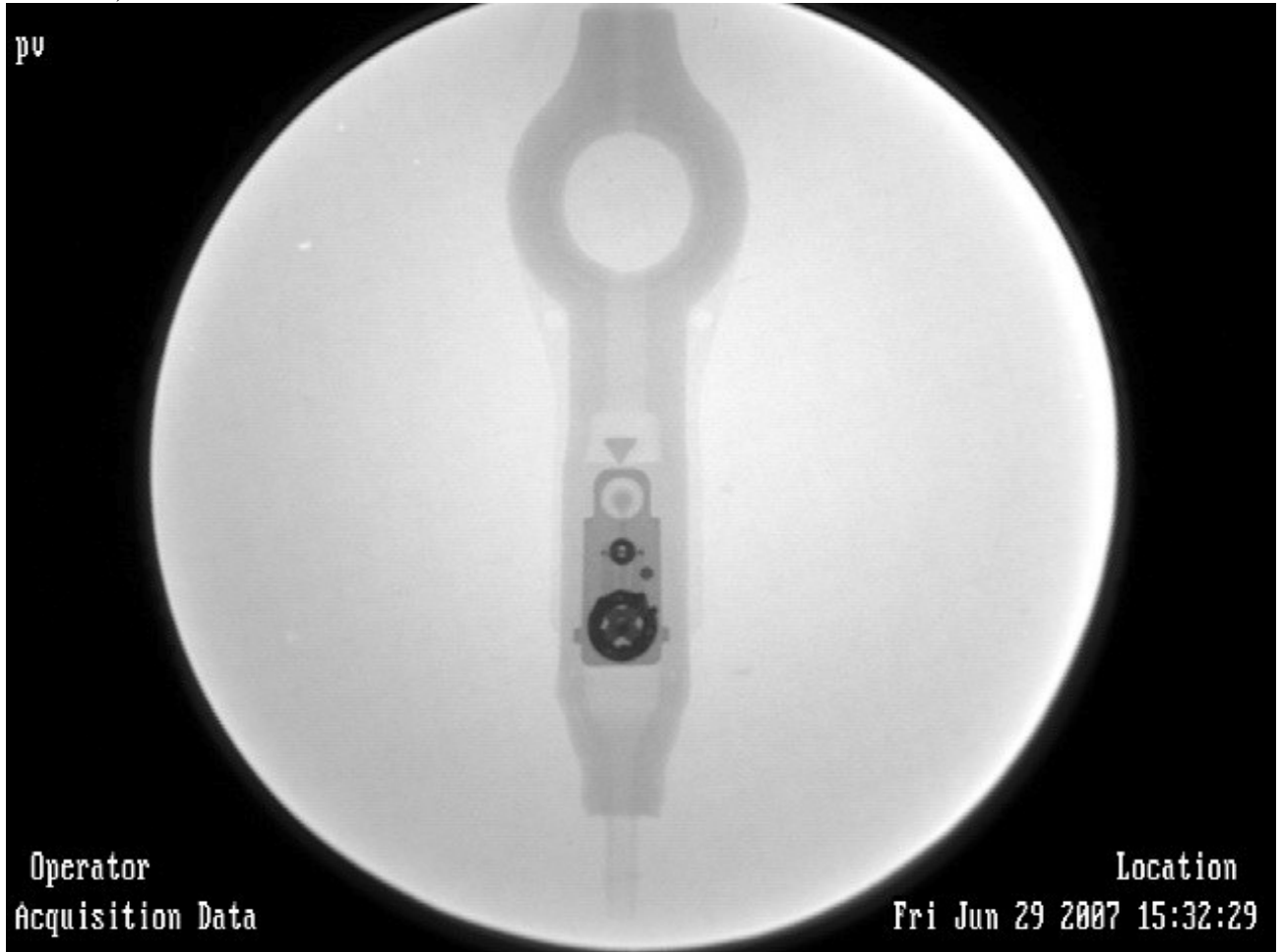
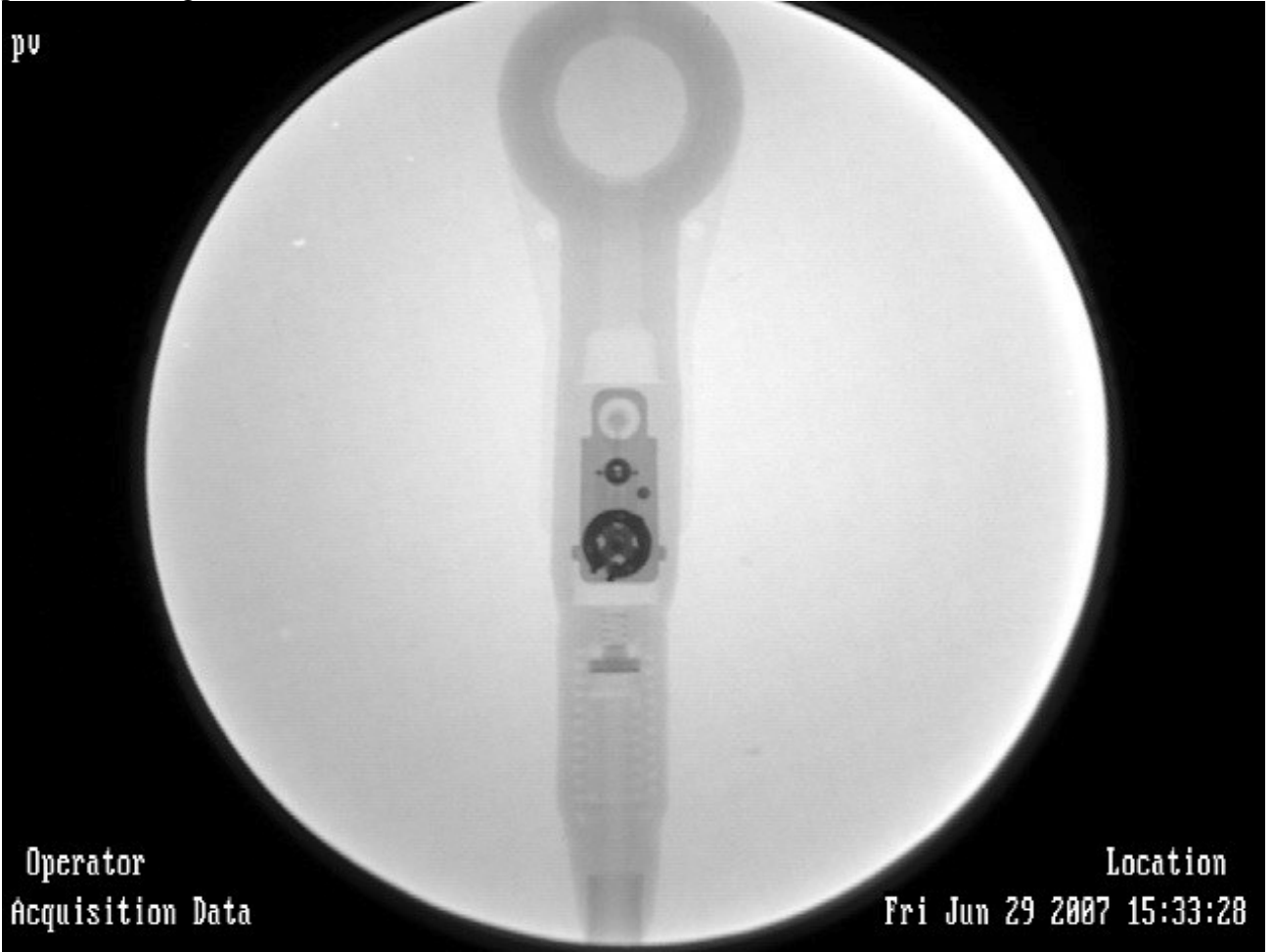


Codman/Johnson&Johnson Shunt Valves
<http://www.codman.com/CSFshunting.asp>

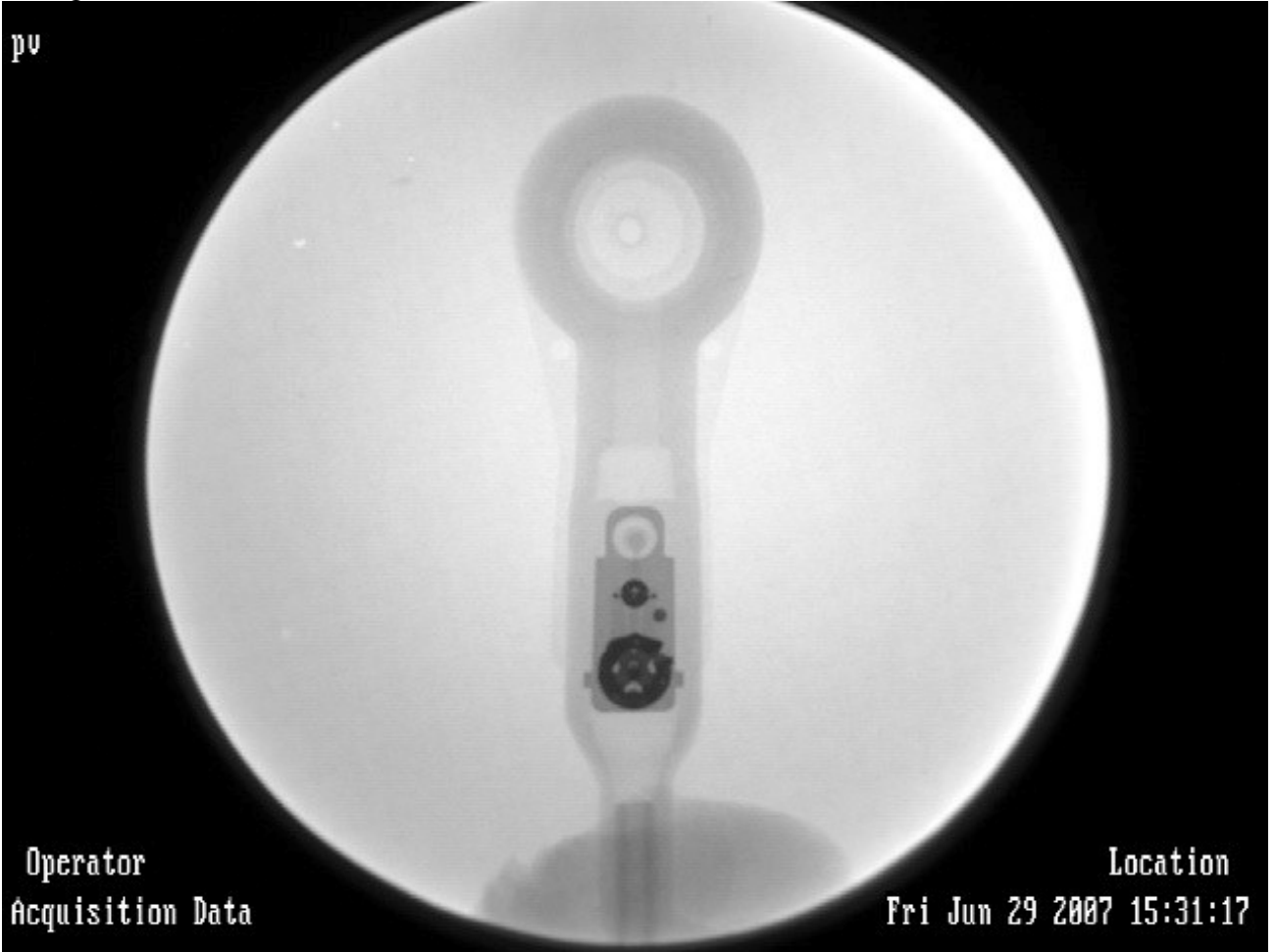
Codman Hakim Programmable Valve, Inline configuration (depicts pressure setting at 30 mmH2O)



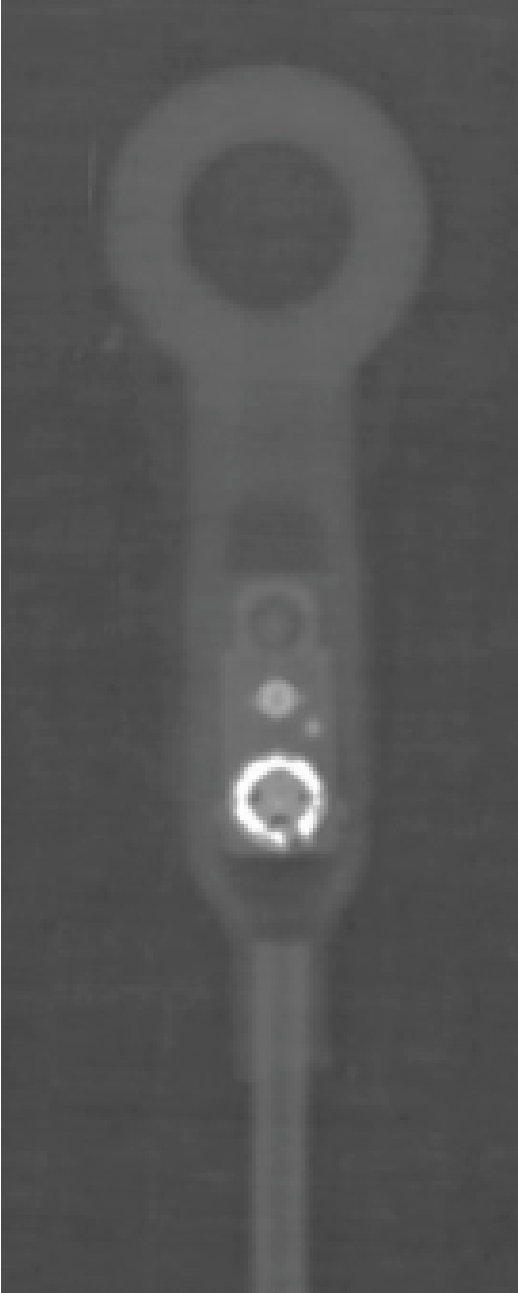
Codman Hakim Programmable Valve, Inline configuration with SiphonGuard (depicts pressure setting at 110 mmH2O)



Codman Hakim Programmable Valve, Right Angle configuration (depicts pressure setting at 30 mmH2O)

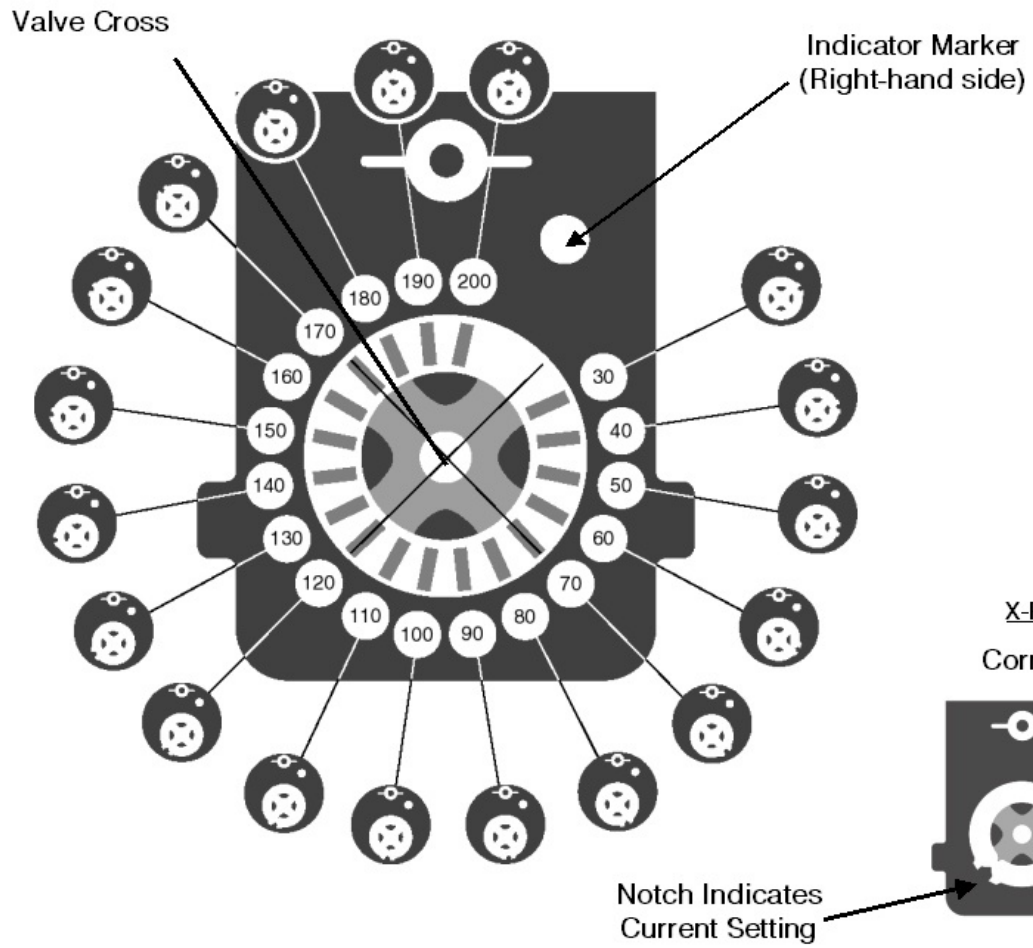


Codman Hakim Programmable Valve (depicts pressure setting at 90 mmH2O)



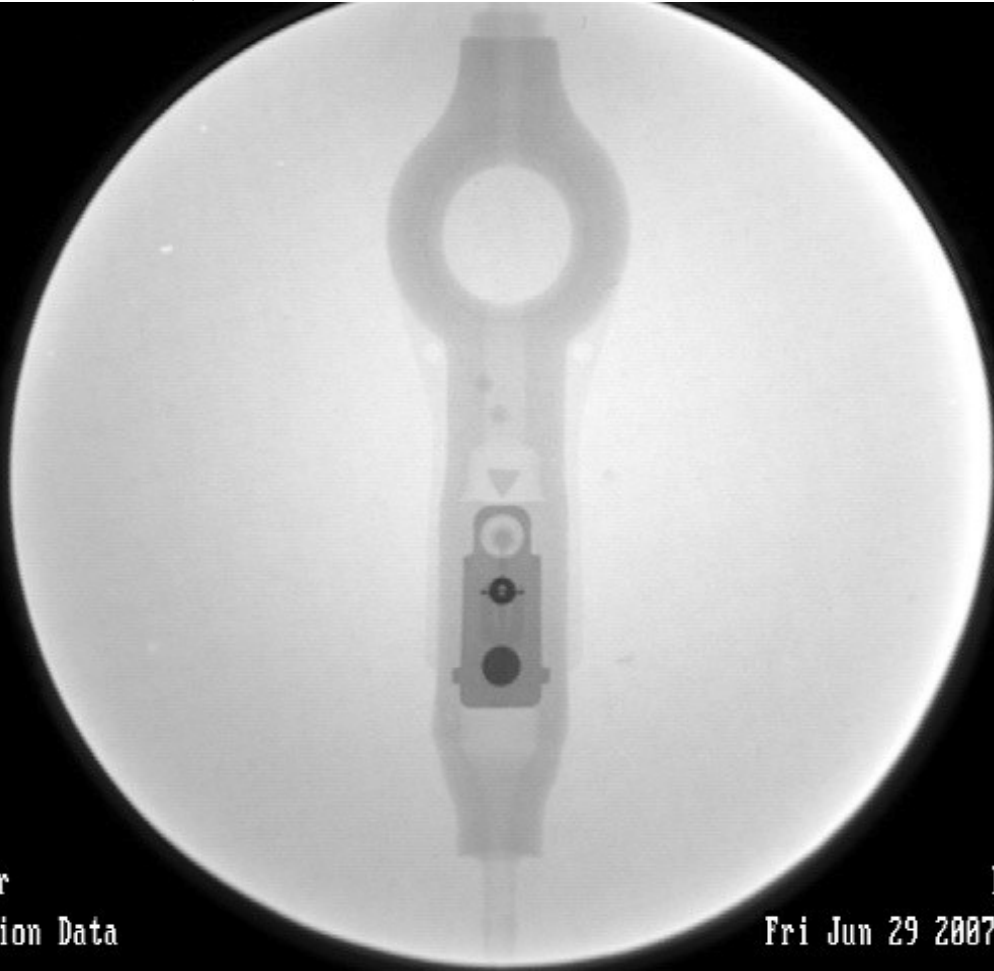
Codman Hakim Programmable Valve setting code

X-ray Valve Setting Verification Tool



Codman Hakim Precision Fixed Pressure Valve, Inline configuration (pressure setting appears to be 70 mmH2O)

pv

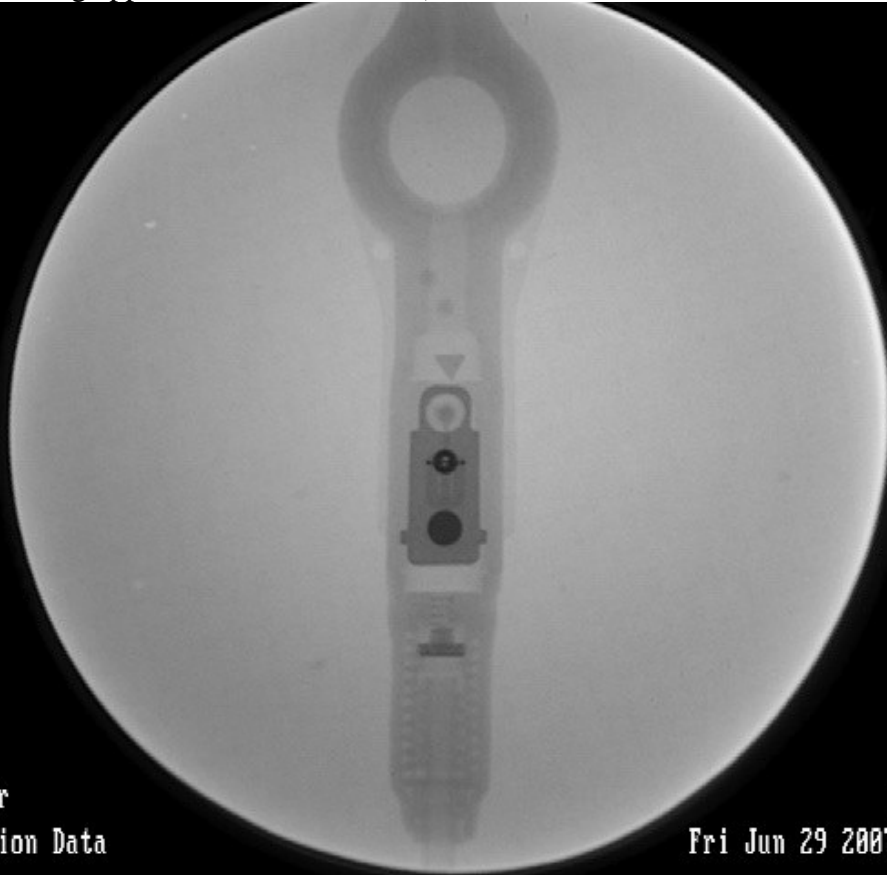


Operator
Acquisition Data

Location
Fri Jun 29 2007 15:32:03

Codman Hakim Precision Fixed Pressure Valve, Inline configuration with SiphonGuard
(pressure setting appears to be 70 mmH2O)

pv



Operator
Acquisition Data

Location
Fri Jun 29 2007 15:24:31

Codman Hakim Precision Fixed Pressure Valve, Right Angle configuration (pressure setting appears to be 130 mmH2O)

pv



Operator
Acquisition Data

Location
Fri Jun 29 2007 15:29:10

Codman Hakim Precision Fixed Pressure Valve code

Codman Precision Valves - 5 Fixed Pressure Models:

- 10mm H2O – very low
- ● 40mm H2O – low
- ● ● 70mm H2O – medium low
- ● ● ● 100mm H2O – medium high
- ● ● ● ● 130mm H2O – high